

SMART FX

System Manual



Risk warning

Before you begin trading on Real account please carefully consider your investment goals, risk and experience you have. It should be noted that Forex is a leverage based market. It should be remembered that leverage can work both in your advantage and disadvantage as well. Therefore there is high risk of losing a part or all of your financial input placed on your account and because of that you should remember to trade with the amount of money which you can lose without taking any influential financial damage.

Disclaimer

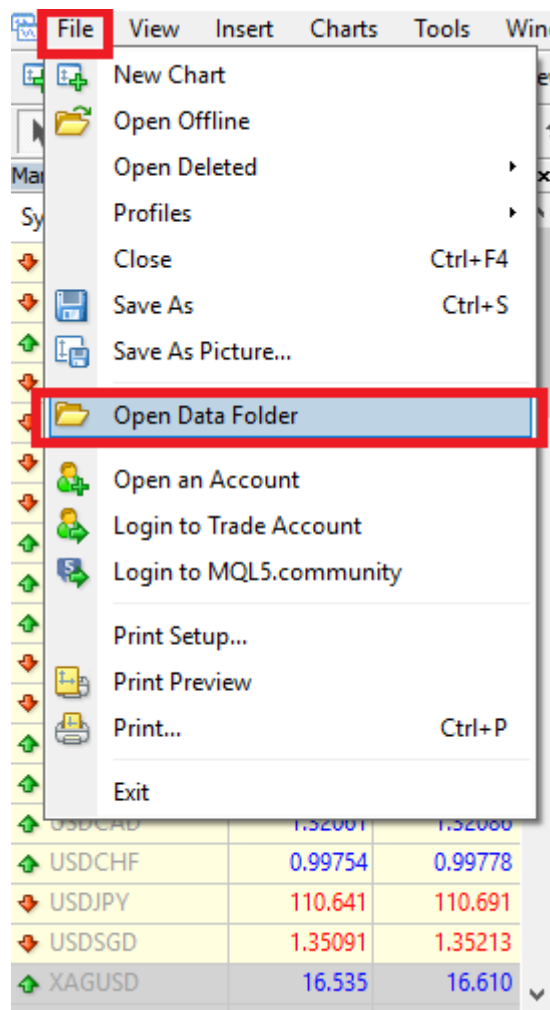
Signals generated by the system are not investment recommendations. All materials included on the website, as well as all system components (indicators, instruction manual) are for educational purposes only. Creators of the system will not take any responsibility for any profit or loss/damage caused by using the system.

Copyright © 2024 www.xsmtrader.com All rights reserved.

Unless otherwise indicated, all materials on these pages are copyrighted. All rights reserved. No part of these pages, either text or image may be used for any purpose other than personal use. Therefore, reproduction, modification, in any form or by any means, electronic, or otherwise, for reasons other than personal use, is strictly prohibited without prior written permission.

1. Installation proces.











- Open your MT4
- Click 'File/Open Data Folder' from the top tab.



- Copy templates files to the 'Templates' folder.

	config	15.06.2018 14:09
	history	08.05.2018 16:03
	logs	16.06.2018 09:40
	MQL4	08.05.2018 16:01
	profiles	13.06.2018 10:20
	templates	15.06.2018 22:52
	tester	13.06.2018 10:44
	origin	08.05.2018 16:01

- Copy indicators to the 'MQL4>Indicators

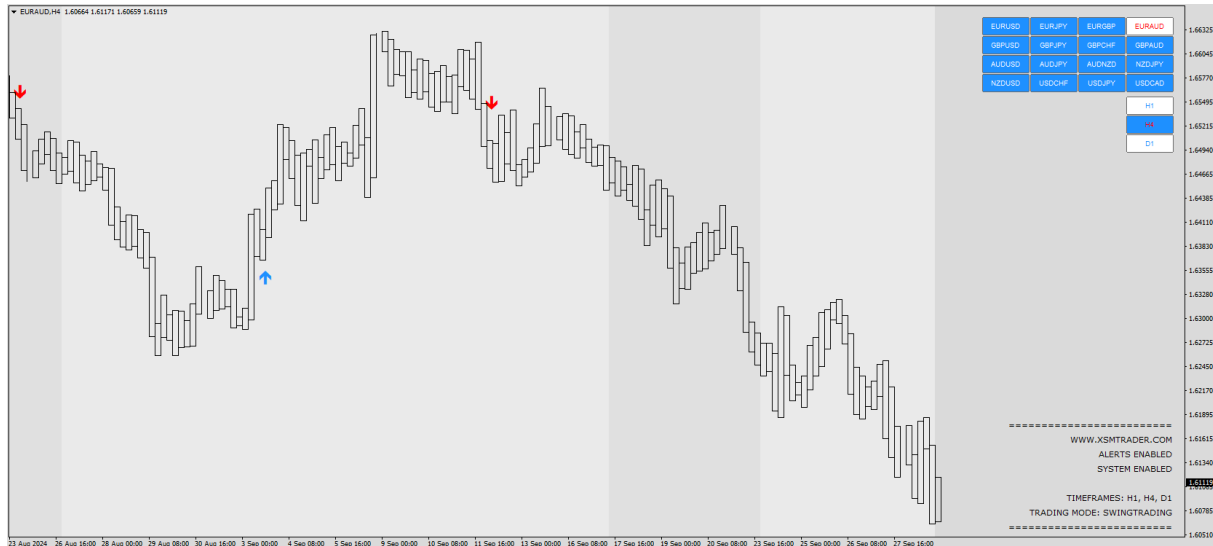
	Experts	08.05.2018 16:02
	Files	08.05.2018 16:01
	Images	08.05.2018 16:01
	Include	08.05.2018 16:01
	Indicators	15.06.2018 22:29
	Libraries	08.05.2018 16:02
	Logs	16.06.2018 09:40
	Presets	08.05.2018 16:01
	Projects	08.05.2018 16:01
	Scripts	08.05.2018 16:02

- Restart your MT4

Open any chart and pick one of the templates:

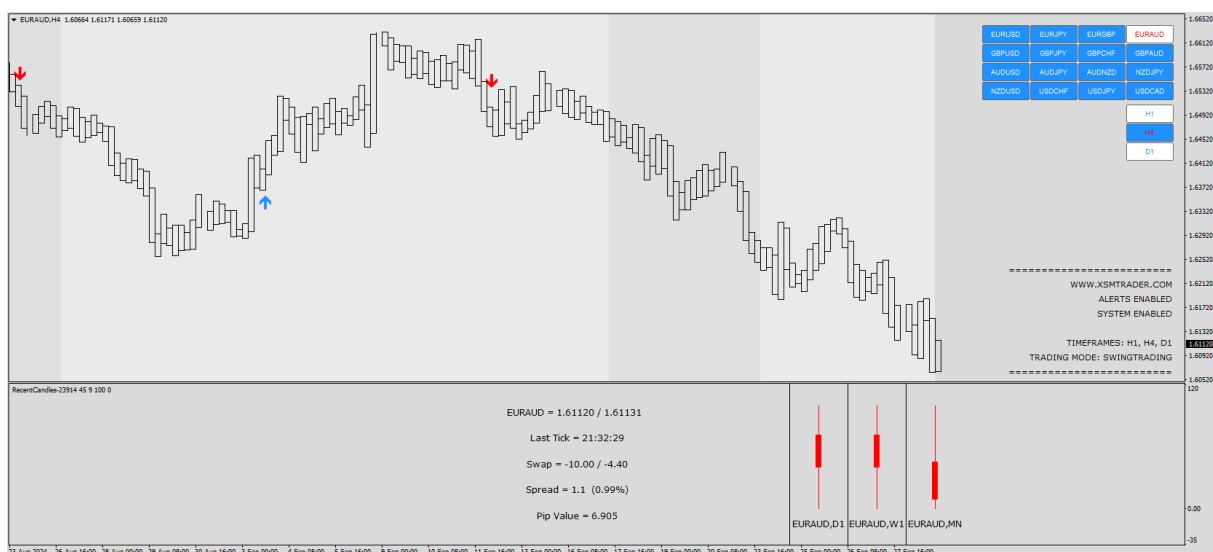
Smart – Scalping/Daytrading/SwingTrading

You should see chart that looks like this:



The last thing we need to do is to load the MTF candles indicator. You can simply drag it from 'Navigator' tab.

It's called 'SmartMTF Scalping /Daytrading/Swing', so please add the one that matches the template (Example: We pick the template: Smart-Daytrading, so we need to add SmartMTF-Daytrading indicator).

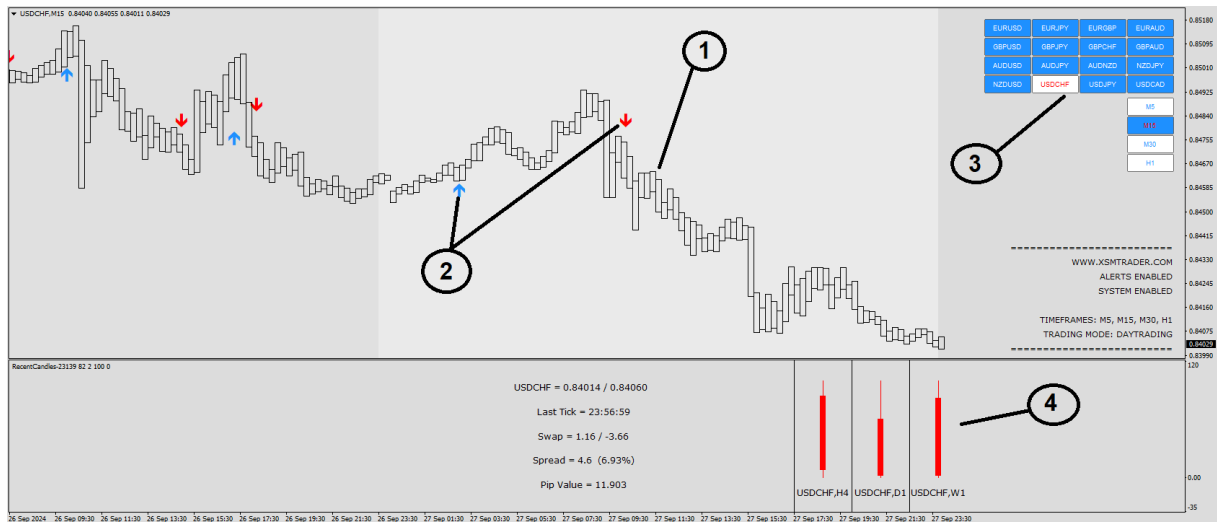


Now the software is ready for trading.

System overview

System contains 4x major trading indicators

1. Smart candles.
2. Entry/Exit Indicator.
3. Trading assistant.
4. MTF candles.

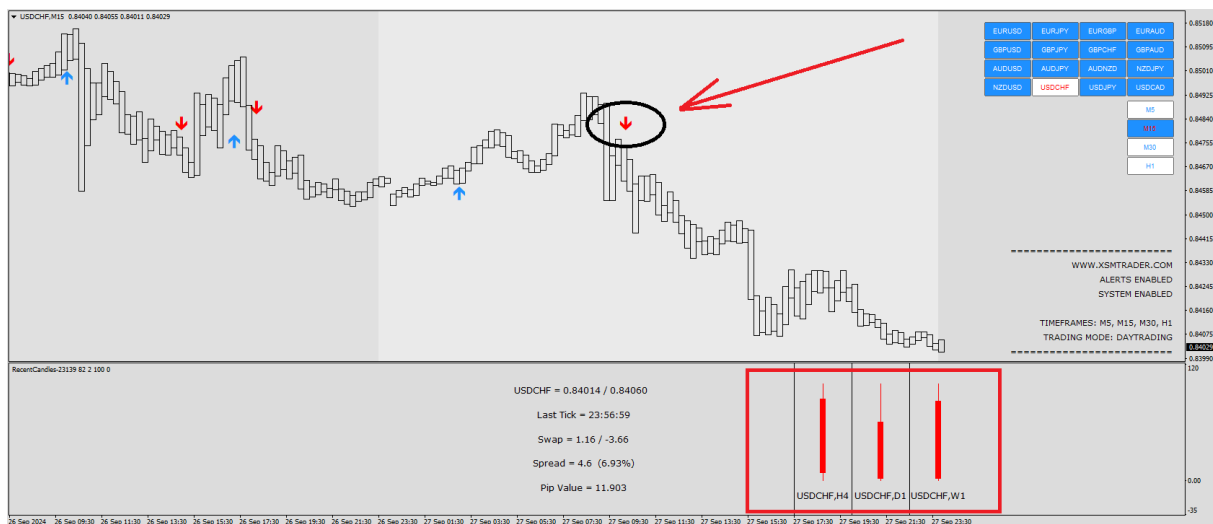


HOW DOES IT WORK.

Entry Examples

SELL TRADE

Wait for a red arrow on the chart. When it will appear check if it's in line with the market MTF trend (bottom indicator). If all 3 candles on the bottom are RED it's a strong sell signal.

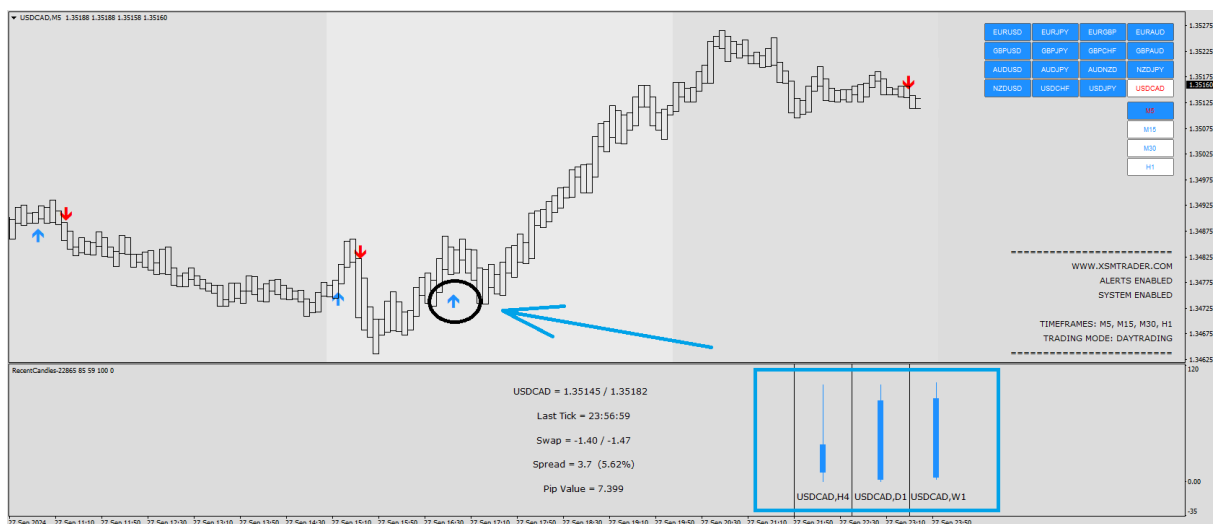


HOW DOES IT WORK.

Entry Examples.

BUY TRADE

Wait for a blue arrow on the chart. When it will appear check if it's in line with the market trend (bottom indicator). If all 3 candles on the bottom are BLUE it's a strong buy signal.



Exit rules.

Default: Wait for an opposite signal.

Other exit techniques:

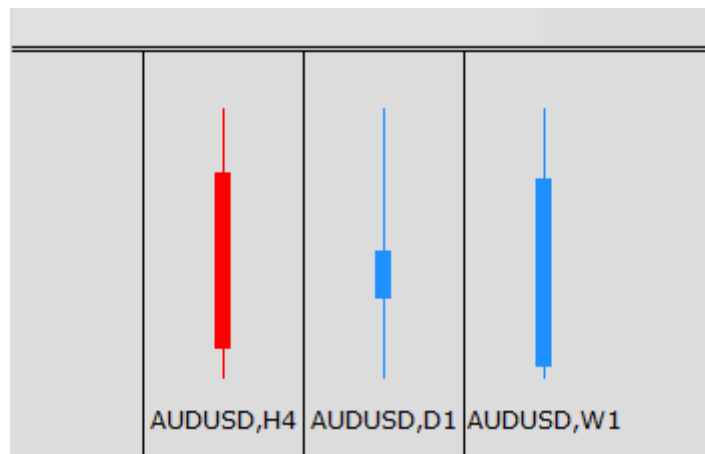
- Use Risk to Reward ratios
- Support and Resistance levels
- Round Numbers

HOW DOES IT WORK.

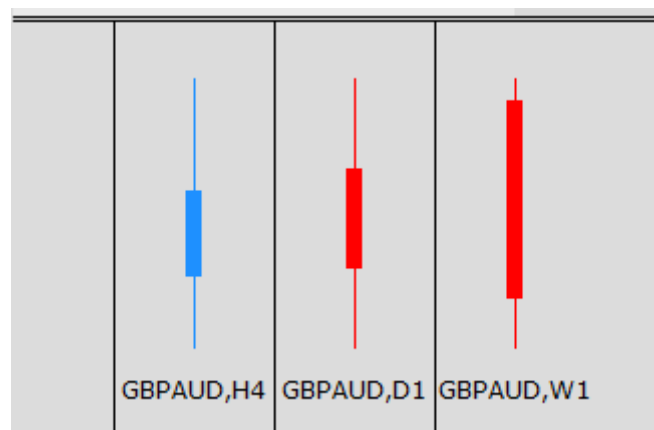
Signal confirmation

Of course, we do not always get 3 x RED or 3 x BLUE candles. Market is not always in the strong trend. Please note, that the signals can be also executed with 2 bars of the same color.

The bars on the right have also stronger impact, as it represents higher timeframes. On this picture we can see that the W1 trend is strong upwards, while H4 can only make some pullback.



The other example shows very strong downtrend on GBPAUD (W1). D1 still looks beraish, but H4 is blue. Sell signals with such confirmation can be also rewarding, as it's highly possible that H4 is only making a pullback (take profit realization).

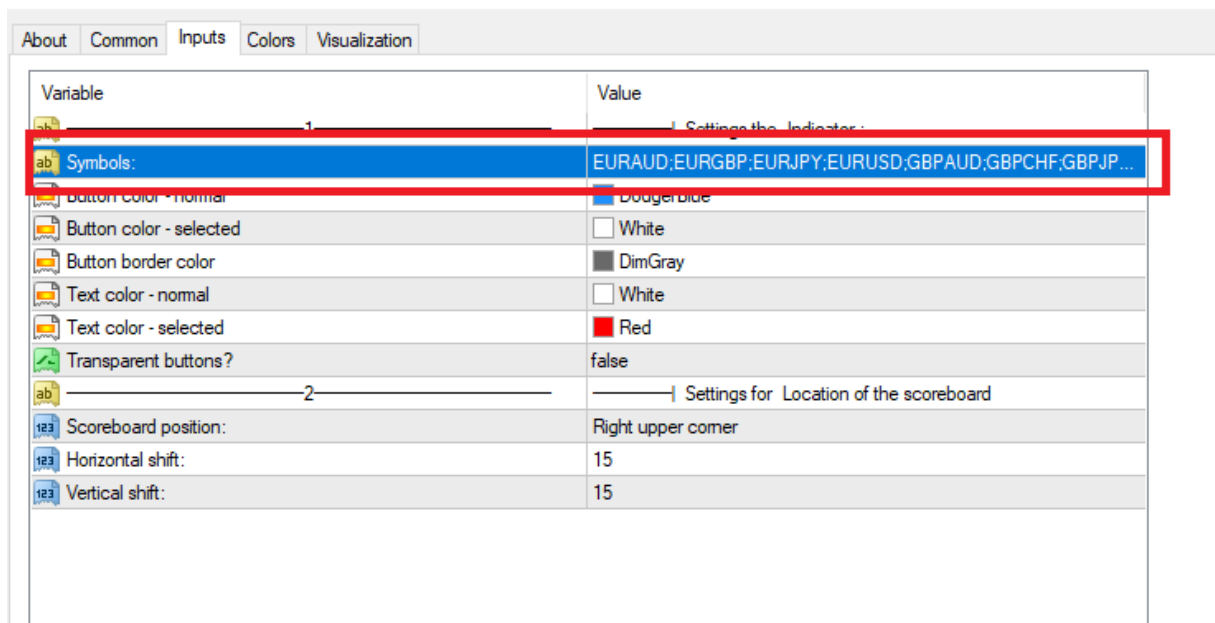


HOW DOES IT WORK.

Trading Assisant

Trading assistant allows for fast pair and timeframe changing. It allows for fast market overview and finding the most trading pairs.

Of course you can change/add your own trading instruments here. Software works on all trading instruments (so also commodities/stock/cryptos).

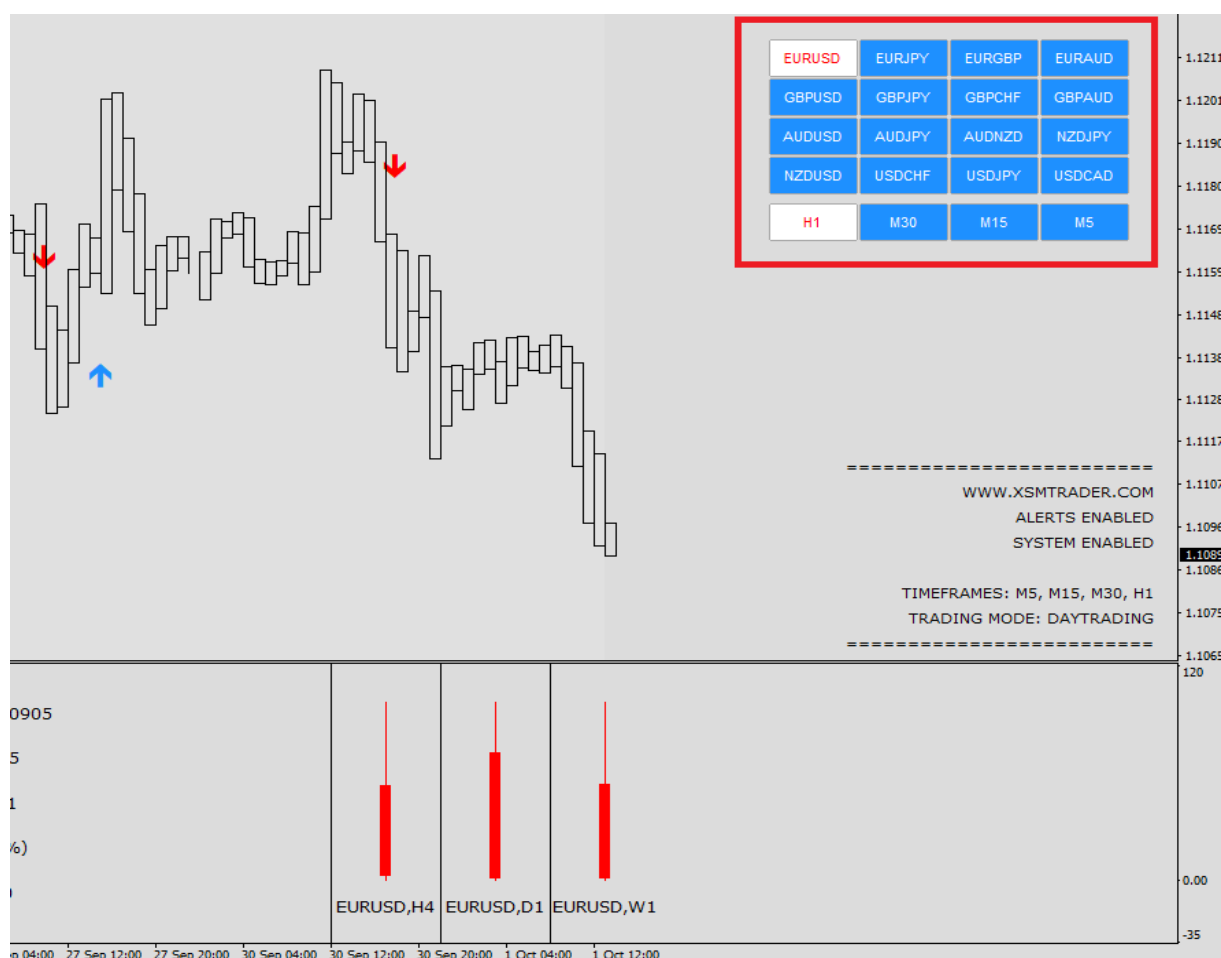


MTF CANDLES DISPLAY ISSUE

We have noticed that on rare occasions (also with only some brokers) the bottom MTF candle indicator may be removed from the chart, when you switch the trading instruments fast using trading assistant.

This is related to not complete chart history with the trading platform.

If this happens on your PC, please just upload the daytrading template and switch all the trading instruments on your trading assistant (h1/m30/m15 timeframes). That way the MT4 will upload all the data and software will work correctly.



If you need any assistance let us know!

support@xsmtrader.com